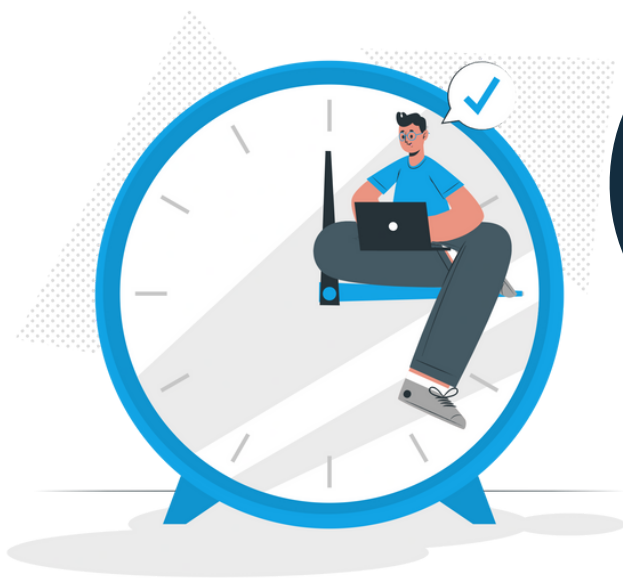


Student Lateness Policy

Simplified Version

- All Students are expected to arrive on time for all class and activities start times.
- Any student arriving after the class start time will be marked 'Late'.
- Students arriving more than 15 minutes late to any part of the class or leaving more than 15 minutes early to any part will be marked late-absent.
- If you are on a student visa (over 11 months) or a short-term visa, your lateness may affect attendance and you may be sent home.
- Any student who arrives more than 15 minutes late may be admitted to the class after the break.
- Students may claim to have valid excuses for patterned lateness. LiA will not accept any reasons for continued lateness to class.
- All teachers should be aware that good attendance and time-keeping is the cornerstone to quality education.



Remember: If you feel you are running late, always tell your leader!



language
in action
JUNIOR PROGRAMMES

M
malvern
INTERNATIONAL